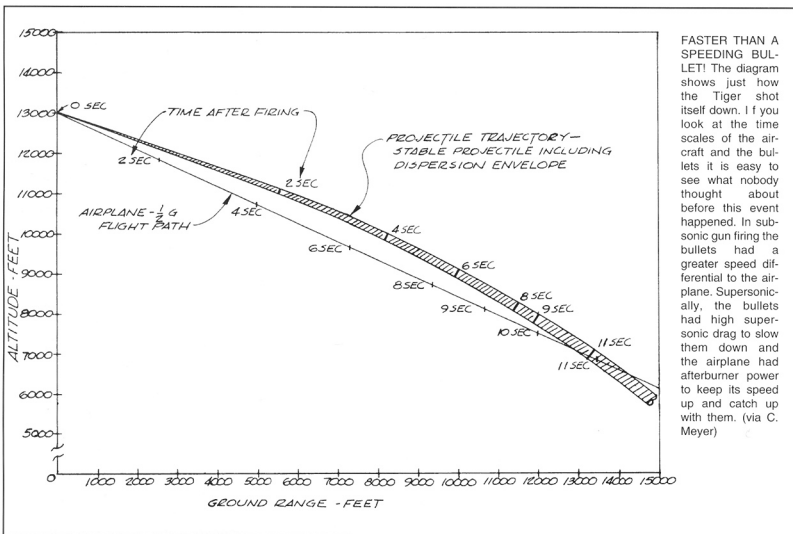
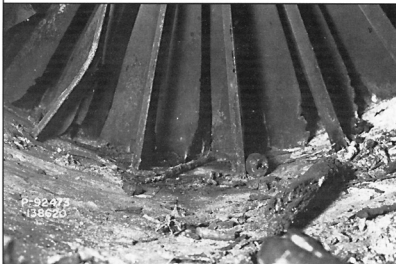


Above left, entry hole of 20mm shell in the nose cone of 138620. Above, windscreen strike position of bullet. (Grumman)



FASTER THAN A SPEEDING BULLET! The diagram shows just how the Tiger shot itself down. If you look at the time scales of the aircraft and the bullets it is easy to see what nobody thought about before this event happened. In subsonic gun firing the bullets had a greater speed differential to the airplane. Supersonically, the bullets had high supersonic drag to slow them down and the airplane had afterburner power to keep its speed up and catch up with them. (via C. Meyer)



At left, bullet as found in the engine after the crash. Below, the bullet after its removal from the engine. (MFR via Meyer)

